

# Pass4guide

Pass4Guide

Discount Sale : Sale2016  
Get 10% OFF

HOME - CERTIFICATIONS - MICROSOFT - SAP - IBM - CITRIX - HOW TO PAY? - GUARANTEE - FAQ

Home / Oracle / Other Oracle Certification / 1z0-100 testing engine

Oracle 1z0-100 : Oracle Linux 5 and 6 System Administration

Exam Code: 1z0-100

Exam Name: Oracle Linux 5 and 6 System Administration

Version: V12.35 Updated: 07-11,2014 Q & A: 100 Questions and Answers

PDF Version PC Test Engine Value Pack

Price: \$5925.00

100% SATISFACTION GUARANTEE

Contact US:  
Support Contact now  
Free Demo Download

Related Exam

- 1z0-236 Testing Engine
- 1z0-209 Testing Engine
- 1z0-264 Testing Engine
- 1z0-023 Testing Engine

Some numerical data

59817 HAPPY CUSTOMERS	67155 DOWNLOADS	35696 TEAM MEMBERS	57696 SHARES
--------------------------	--------------------	-----------------------	-----------------



<http://www.pass4guide.com>

100% pass your exam test with our valid and useful exam study guide

**Exam** : **300-915**

**Title** : Developing Solutions using  
Cisco IoT & Edge Platforms

**Vendor** : Cisco

**Version** : DEMO

**NO.1** When an RS232 device is connected to a Cisco IR829 router, the data collected is not being parsed correctly by the edge application.

Which two steps should be taken to troubleshoot the issue? (Choose two.)

- A. Communication mode must be set to half duplex over serial connection.
- B. SSH access on the Cisco IR829 router must be enabled for IOx Guest OS.
- C. Ensure that communication parameters like baud rate and parity are set correctly.
- D. Serial cable length should not exceed 1.5 meters.
- E. Set the cable connections based on the PIN layout from the sensor vendor.

**Answer:** C,E

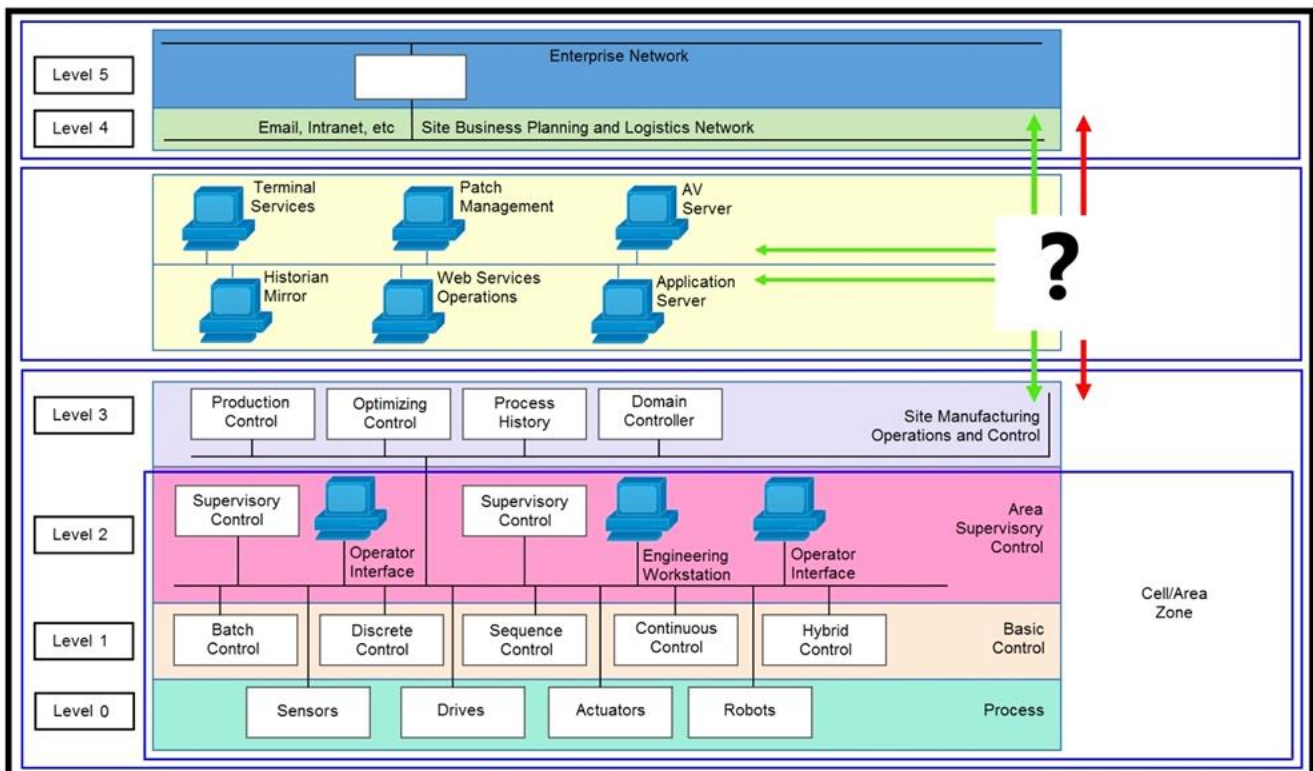
**NO.2** As part of an IoT project, an organization is developing an application that will share multiple clients using a REST API.

Based on the software development process, what are two valid technical activities that can be suggested to secure the REST API that is developed during the development of the software? (Choose two.)

- A. Implement and review audit logs for security-related events.
- B. Implement HTTP whitelisting to only methods that are allowed.
- C. Reject HTTP methods that are invalid with an error code 404.
- D. Implement physical firewalling and access control to the resources.
- E. Respond to request failures in detail to allow users for easier troubleshooting.

**Answer:** B,C

**NO.3** Refer to the exhibit.



Which product must be positioned where the "?" is placed to connect these different network levels?

- A. router

- B. firewall
- C. wireless access port
- D. switch

**Answer:** A

**NO.4** When constructing a Python script for data extraction using GMM APIs on a Cisco Kinetic Cloud platform, how should the API authentication be implemented?

- A. Use a complex username and password with 128-bit encryption.
- B. Generate the API keys once and edit the permissions as needed.
- C. Generate and use the API keys for the required access level from the Kinetic Cloud application.
- D. Use a complex username with an auto-generated password from the Kinetic Cloud application.

**Answer:** C

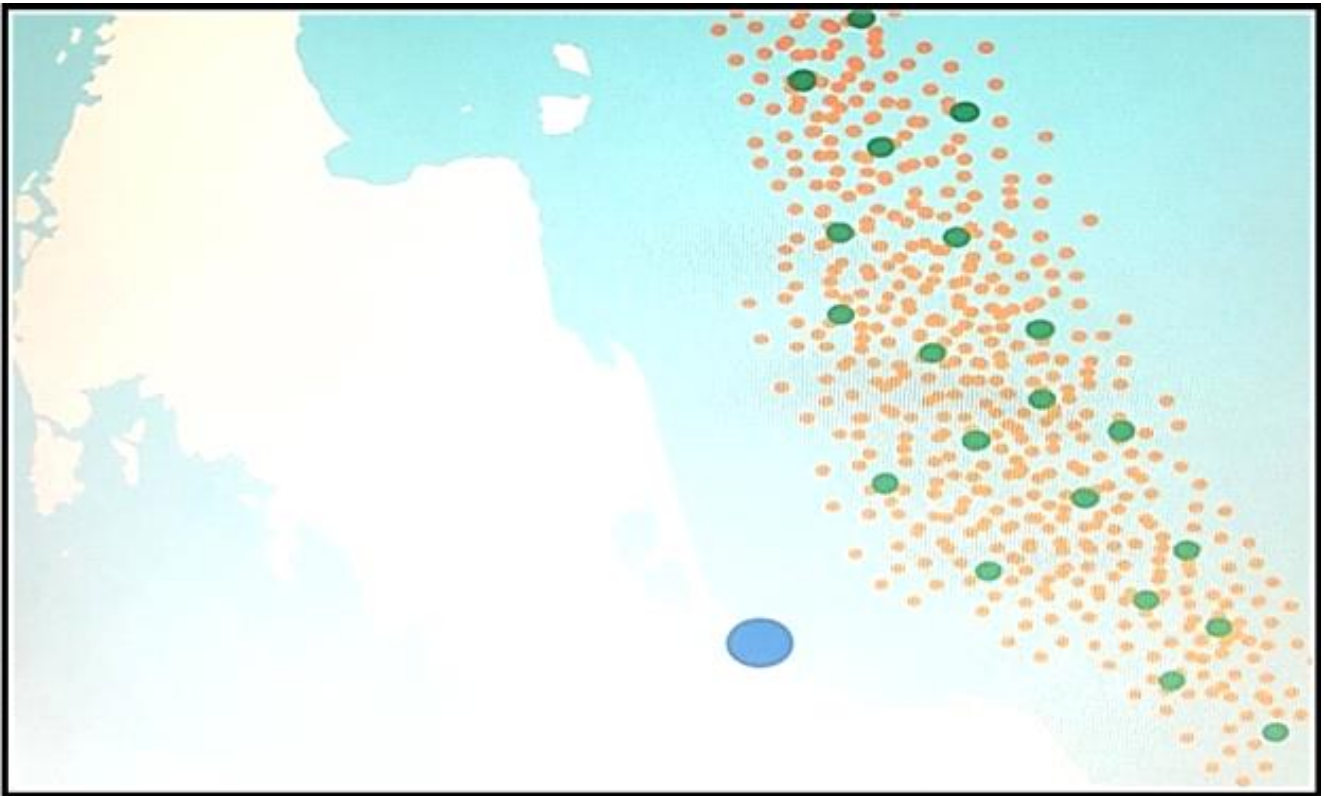
**NO.5** An application needs to calculate if the product meets a determined quality specification, activate an automation to remove poor quality products, and report detailed results back to the cloud. All data are captured from an application that is connected to a sensor. Using the SDK of the cloud provider, drag and drop the tasks that must be completed from the left to the right. Not all options are used.

code function for detection	
quality specification of product	
credentials for network and cloud operations	
sensor function with sensor SDK	
user interaction with the application	
cloud function communication with cloud SDK	
product removal function	

**Answer:**

code function for detection	code function for detection
quality specification of product	quality specification of product
credentials for network and cloud operations	sensor function with sensor SDK
sensor function with sensor SDK	cloud function communication with cloud SDK
user interaction with the application	product removal function
cloud function communication with cloud SDK	
product removal function	

**NO.6** Refer to the exhibit.



Approximately 4000 oil platforms, each with 400 sensors, are spread in the Gulf of Mexico and all of their data must come together into one dashboard. Which general architecture should be selected to connect them?

- A.** 5-tier: intelligent sensor- edge device (Intel Atom CPU) - fog device (Intel Xeon CPU) - edge data center (Intel Xeon CPU)
- B.** 4-tier: sensor - edge device (Intel Atom CPU) - fog device (Intel Xeon CPU) - cloud
- C.** 3-tier: sensor - edge device (Intel Atom CPU) - cloud
- D.** 2-tier: intelligent sensor - cloud

**Answer:** A